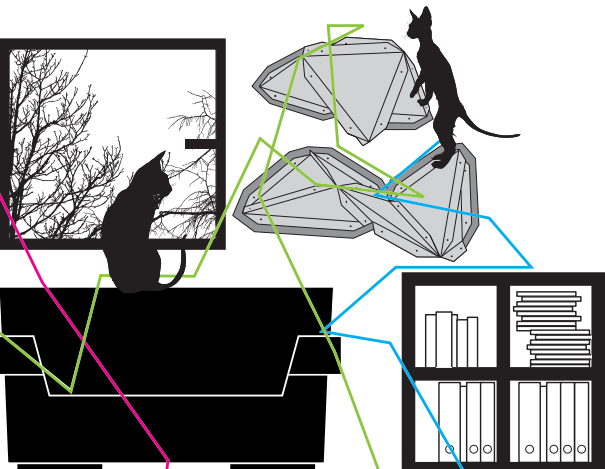
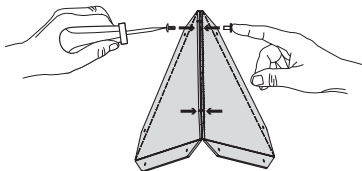
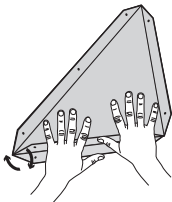
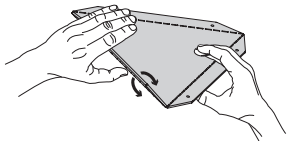


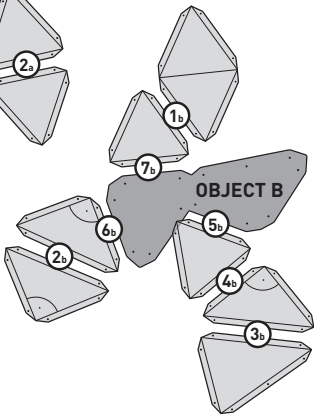
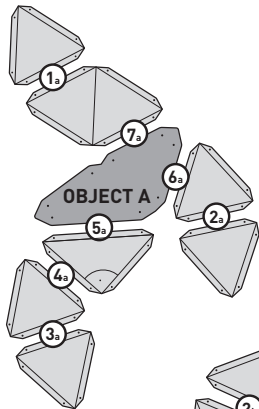
MIUT
CAT INTERIOR SOLUTIONS



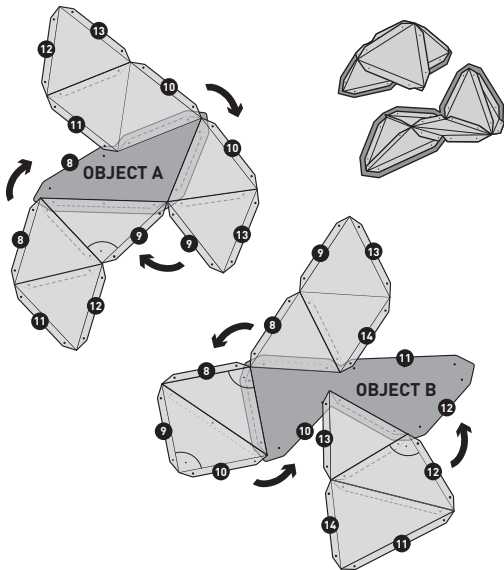
1 BEND ALL FLAPS IN BOTH DIRECTIONS



2 POSITION PARTS

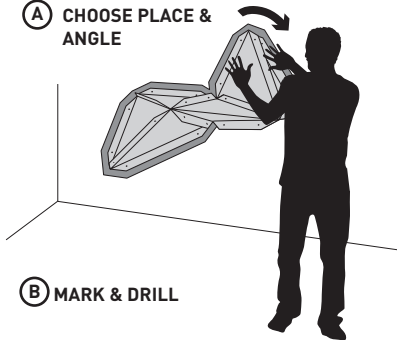


3 CONNECT PARTS



4 DEFINE PLACE & ANGLE

(A) CHOOSE PLACE & ANGLE

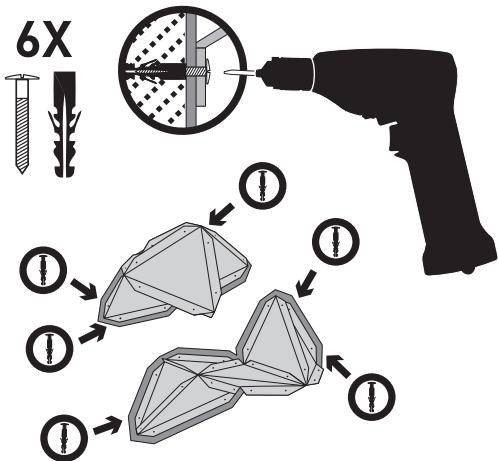


(B) MARK & DRILL

REMOVE 6X 



5 MOUNT TO THE WALL



**CHOOSE THE APPROPRIATE SCREWS AND
DOWELS FOR YOUR WALL.**

6 ENJOY !

